

PROFUSE-S1

Skeletal Muscle Cell Differentiation, Fusion & Maturation Supplement



PROFUSE-S1 is a media supplement that significantly accelerates the differentiation, fusion, and maturation rate of muscle progenitor cells leading to significantly shorter time to endpoint studies. PROFUSE-S1 can be used on cells of various species and media types including serum free media formulations.

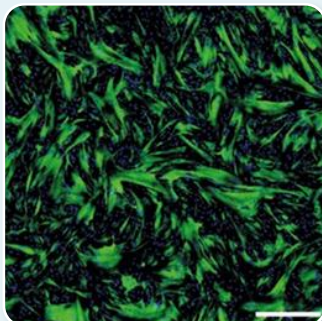
www.profuse-tech.com/products

PROFUSE-S1 ENABLES THE ABILITY TO

- 1 — Conclude experiments faster with more reliable results, promoting expedited progress in your research and development.
- 2 — Develop various muscle models in a flexible and efficient manner using different cell types and cells culture media.
- 3 — Develop an in vitro muscle model that better mimics natural muscle, allowing more accurate disease modeling.
- 4 — Evaluate the impact of your gene of interest on muscle differentiation and fusion.
- 5 — Engineer clinically relevant muscle tissue constructs for regenerative medicine, in terms of protein profile and functionality.
- 6 — Achieve greater biomass production and higher protein levels.

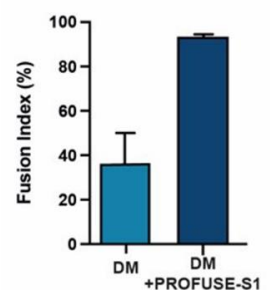
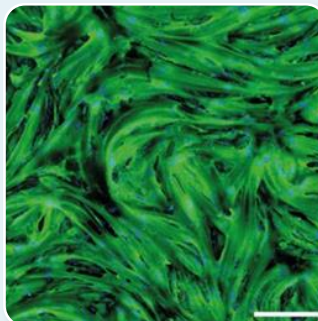
PROFUSE-S1 enhances bovine myoblast cells differentiation (48 hours post treatment)

Differentiation Media (DM)



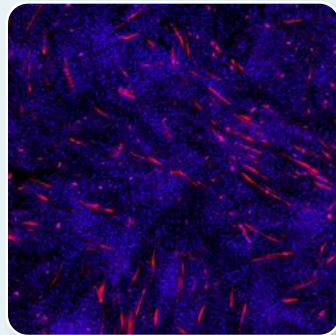
Myotubes (α -Actinin) / Nuclei

DM+ PROFUSE-S1

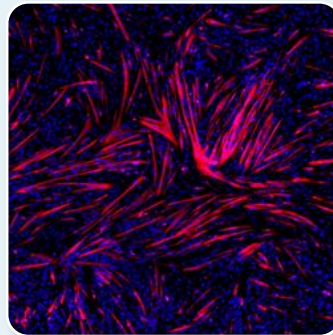


**PROFUSE-S1
enhances
C2C12
differentiation
(72 hours post
treatment)**

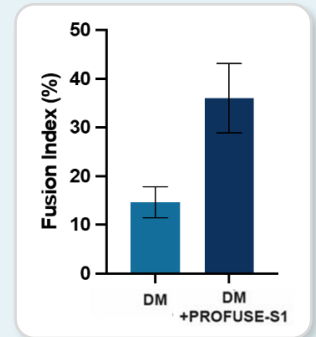
Differentiation Media (DM)



DM+ PROFUSE-S1



Myotubes (MyHC) / Nuclei



- Validated on primary myoblasts of various species (murine, bovine, ovine, porcine, avian, and piscine), and predicted to work on human cells.
- Effective on immortalized myoblast cells including C2C12, and on transdifferentiated fibroblasts.
- Effective on myoblasts used for the generation of 3D engineered bioartificial muscles using scaffolds and various hydrogels.
- Effective in serum free media.

ABOUT PROFUSE

We at ProFuse Technology are muscle cultivation experts, developing products for muscle tissue growth for the cultivated meat and life science sectors. Based on six years of research at the Weizmann Institute of Science, our technology focus encompasses the development of cell lines, media supplements, cultivation methods and AI-based analysis.

Our products aim not only to boost yield, expedite production cycles and enable growth of mature muscle tissue, but also to significantly reduce overall production costs. We actively engage in collaborations with prominent cultivated meat and life science companies, seamlessly integrating our technology into their production processes and research activity.

ProFuse Technology Ltd. was established in 2021 with the support of the Fresh Start FoodTech Incubator, Tzahor's lab in WIS and The Israeli Innovation Authority. The company is backed by industrial and financial investors including Tnuva – Israel's leading food company, Tempo – a leading beverage company, OurCrowd's investment platform and the global Agrifood VC – Finistere Ventures and Green-Circle, a NY-based foodtech fund.



For inquiries and orders contact us:
service@profuse-tech.com